



COMUNE DI PONTECAGNANO FAIANO  
(Provincia di Salerno)

SETTORE LAVORI PUBBLICI INFRASTRUTTURE PATRIMONIO  
IGIENE URBANA E S.A.D. "PICENTINI E BATTIPAGLIA"

PROGETTO ESECUTIVO  
ai sensi dell'art. 41 del D. Lgs. n. 36 del 31 Marzo 2023

OGGETTO  
LAVORI DI " REALIZZAZIONE NUOVO ASILO NIDO  
VIA ABATE CONFORTI-VIA SANDRO PERTINI  
LOCALITA' SAN ANTONIO

TAVOLA  
9.4  
ELABORATO  
Armature dei pilastri: pilastrate - tabelle pilastri

Data: Ottobre 2025 Scala: 1:50

Progettista architettonico:  
Ing. Rosario Antonini  
Responsabile del Settore e RUP:  
Arch. Giovanni Landi

Revisione del Revisione del Revisione del

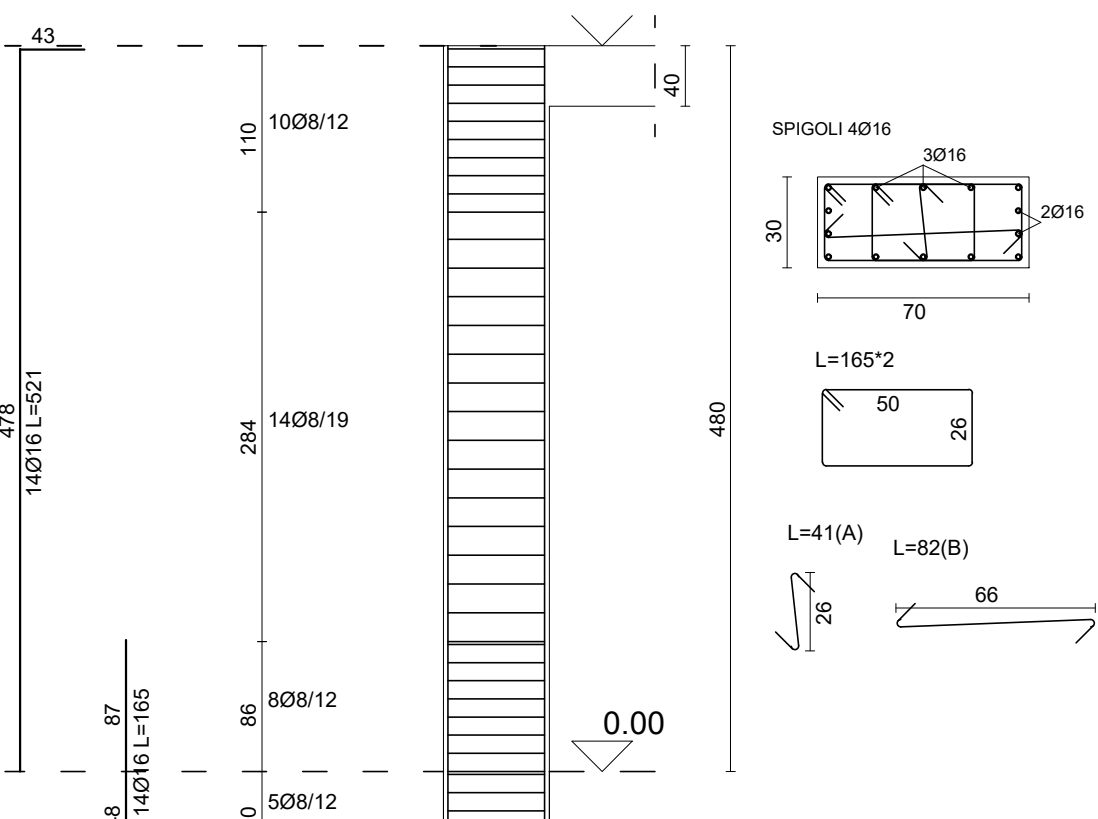
TABELLA PILASTRI QUOTA m: 0.00			
PIL.		PIL.	
1	L=480 L.FER=521 SPIGOLI 4816 A= 3016 B= 3016 C= 3016 D= 3016 STAFFE: 50'26 L.TOT=164'2 Ø8/12 L= 110 Ø8/16 L= 280 Ø8/12 L= 84	10	L=480 L.FER=521 SPIGOLI 4816 A= 3016 B= 3016 C= 3016 D= 3016 STAFFE: 20'50 L.TOT=164'2 Ø8/12 L= 110 Ø8/16 L= 280 Ø8/12 L= 84
2	L=480 L.FER=521 SPIGOLI 4816 A= 3016 B= 3016 C= 3016 D= 3016 STAFFE: 20'50 L.TOT=164'2 Ø8/12 L= 110 Ø8/16 L= 280 Ø8/12 L= 84	11	L=480 L.FER=521 SPIGOLI 4816 A= 3016 B= 3016 C= 3016 D= 3016 STAFFE: 20'50 L.TOT=164'2 Ø8/12 L= 110 Ø8/16 L= 277 Ø8/12 L= 83
3	L=480 L.FER=521 SPIGOLI 4816 A= 3016 B= 3016 C= 3016 D= 3016 STAFFE: 50'26 L.TOT=164'2 Ø8/12 L= 111 Ø8/16 L= 284 Ø8/12 L= 85	12	L=480 L.FER=521 SPIGOLI 4816 A= 3016 B= 3016 C= 3016 D= 3016 STAFFE: 20'50 L.TOT=164'2 Ø8/12 L= 110 Ø8/16 L= 280 Ø8/12 L= 81
ACCIAIO B450C		CALCESTR. C25/30	

TABELLA PILASTRI QUOTA m: 0.00			
PIL.		PIL.	
19	L=480 L.FER=521 SPIGOLI 4816 A= 3016 B= 3016 C= 3016 D= 3016 STAFFE: 50'26 L.TOT=164'2 Ø8/12 L= 110 Ø8/16 L= 280 Ø8/12 L= 78	34	L=480 L.FER=521 SPIGOLI 4816 A= 3016 B= 3016 C= 3016 D= 3016 STAFFE: 50'26 L.TOT=164'2 Ø8/12 L= 110 Ø8/16 L= 280 Ø8/12 L= 79
26	L=480 L.FER=521 SPIGOLI 4816 A= 3016 B= 3016 C= 3016 D= 3016 STAFFE: 20'50 L.TOT=164'2 Ø8/12 L= 111 Ø8/16 L= 280 Ø8/12 L= 76	38	L=480 L.FER=521 SPIGOLI 4816 A= 3016 B= 3016 C= 3016 D= 3016 STAFFE: 50'26 L.TOT=164'2 Ø8/12 L= 112 Ø8/16 L= 280 Ø8/12 L= 79
33	L=480 L.FER=521 SPIGOLI 4816 A= 3016 B= 3016 C= 3016 D= 3016 STAFFE: 20'50 L.TOT=164'2 Ø8/12 L= 110 Ø8/16 L= 280 Ø8/12 L= 85	39	L=480 L.FER=521 SPIGOLI 4816 A= 3016 B= 3016 C= 3016 D= 3016 STAFFE: 50'26 L.TOT=164'2 Ø8/12 L= 110 Ø8/16 L= 280 Ø8/12 L= 82
ACCIAIO B450C		CALCESTR. C25/30	

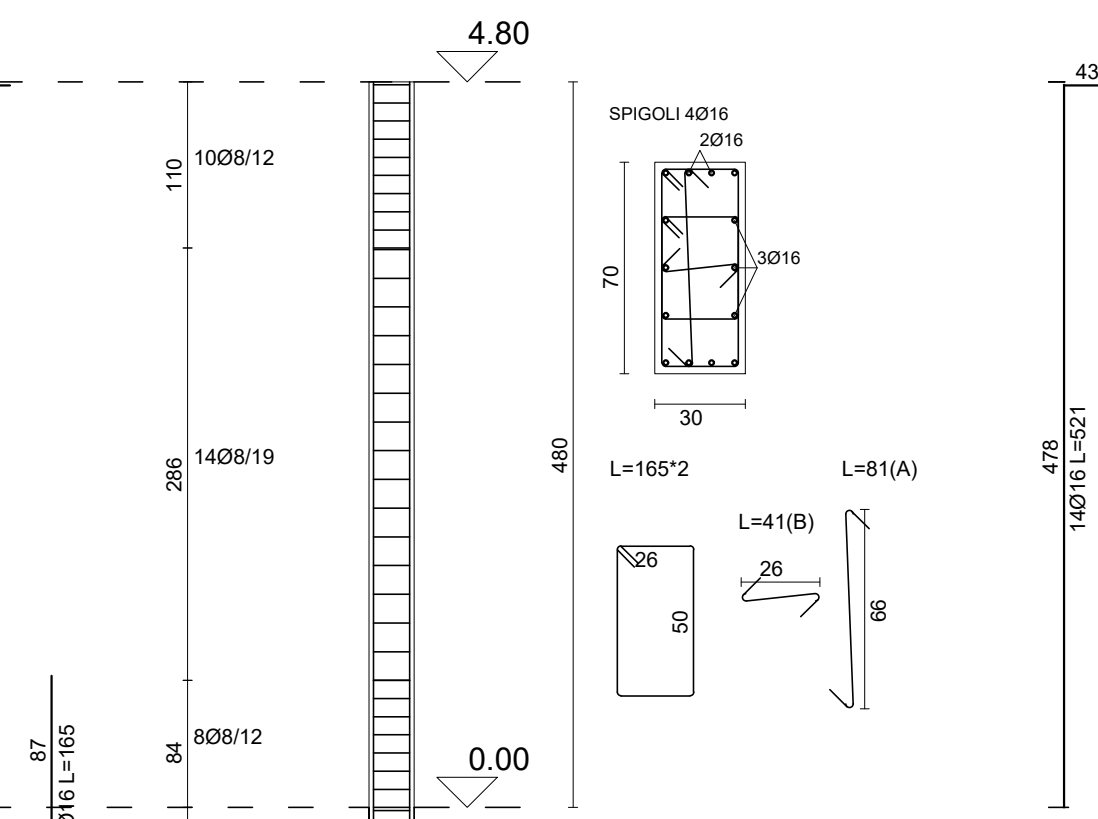
TABELLA PILASTRI QUOTA m: 0.00			
PIL.		PIL.	
40	L=480 L.FER=521 SPIGOLI 4816 A= 3016 B= 3016 C= 3016 D= 3016 STAFFE: 50'26 L.TOT=164'2 Ø8/12 L= 110 Ø8/16 L= 280 Ø8/12 L= 84	49	L=480 L.FER=521 SPIGOLI 4816 A= 3016 B= 3016 C= 3016 D= 3016 STAFFE: 50'26 L.TOT=164'2 Ø8/12 L= 110 Ø8/16 L= 280 Ø8/12 L= 81
44	L=480 L.FER=521 SPIGOLI 4816 A= 3016 B= 3016 C= 3016 D= 3016 STAFFE: 20'50 L.TOT=164'2 Ø8/12 L= 110 Ø8/16 L= 280 Ø8/12 L= 83	51	L=480 L.FER=521 SPIGOLI 4816 A= 3016 B= 3016 C= 3016 D= 3016 STAFFE: 20'50 L.TOT=164'2 Ø8/12 L= 110 Ø8/16 L= 281 Ø8/12 L= 79
45	L=480 L.FER=521 SPIGOLI 4816 A= 3016 B= 3016 C= 3016 D= 3016 STAFFE: 20'50 L.TOT=164'2 Ø8/12 L= 110 Ø8/16 L= 281 Ø8/12 L= 79	52	L=480 L.FER=521 SPIGOLI 4816 A= 3016 B= 3016 C= 3016 D= 3016 STAFFE: 20'50 L.TOT=164'2 Ø8/12 L= 110 Ø8/16 L= 280 Ø8/12 L= 80
ACCIAIO B450C		CALCESTR. C25/30	

TABELLA PILASTRI QUOTA m: 0.00			
PIL.		PIL.	
53	L=480 L.FER=521 SPIGOLI 4816 A= 3016 B= 3016 C= 3016 D= 3016 STAFFE: 30'53 L.TOT=165'2 Ø8/12 L= 130 Ø8/16 L= 280 Ø8/12 L= 80	57	L=480 L.FER=521 SPIGOLI 4816 A= 3016 B= 3016 C= 3016 D= 3016 STAFFE: 50'26 L.TOT=164'2 Ø8/12 L= 110 Ø8/16 L= 280 Ø8/12 L= 84
54	L=480 L.FER=521 SPIGOLI 4816 A= 3016 B= 3016 C= 3016 D= 3016 STAFFE: 50'26 L.TOT=164'2 Ø8/12 L= 110 Ø8/16 L= 280 Ø8/12 L= 80	58	L=480 L.FER=521 SPIGOLI 4816 A= 3016 B= 3016 C= 3016 D= 3016 STAFFE: 20'50 L.TOT=164'2 Ø8/12 L= 112 Ø8/16 L= 281 Ø8/12 L= 77
56	L=480 L.FER=521 SPIGOLI 4816 A= 3016 B= 3016 C= 3016 D= 3016 STAFFE: 30'53 L.TOT=164'2 Ø8/12 L= 110 Ø8/16 L= 280 Ø8/12 L= 80	59	L=480 L.FER=521 SPIGOLI 4816 A= 3016 B= 3016 C= 3016 D= 3016 STAFFE: 20'50 L.TOT=164'2 Ø8/12 L= 110 Ø8/16 L= 284 Ø8/12 L= 76
ACCIAIO B450C		CALCESTR. C25/30	

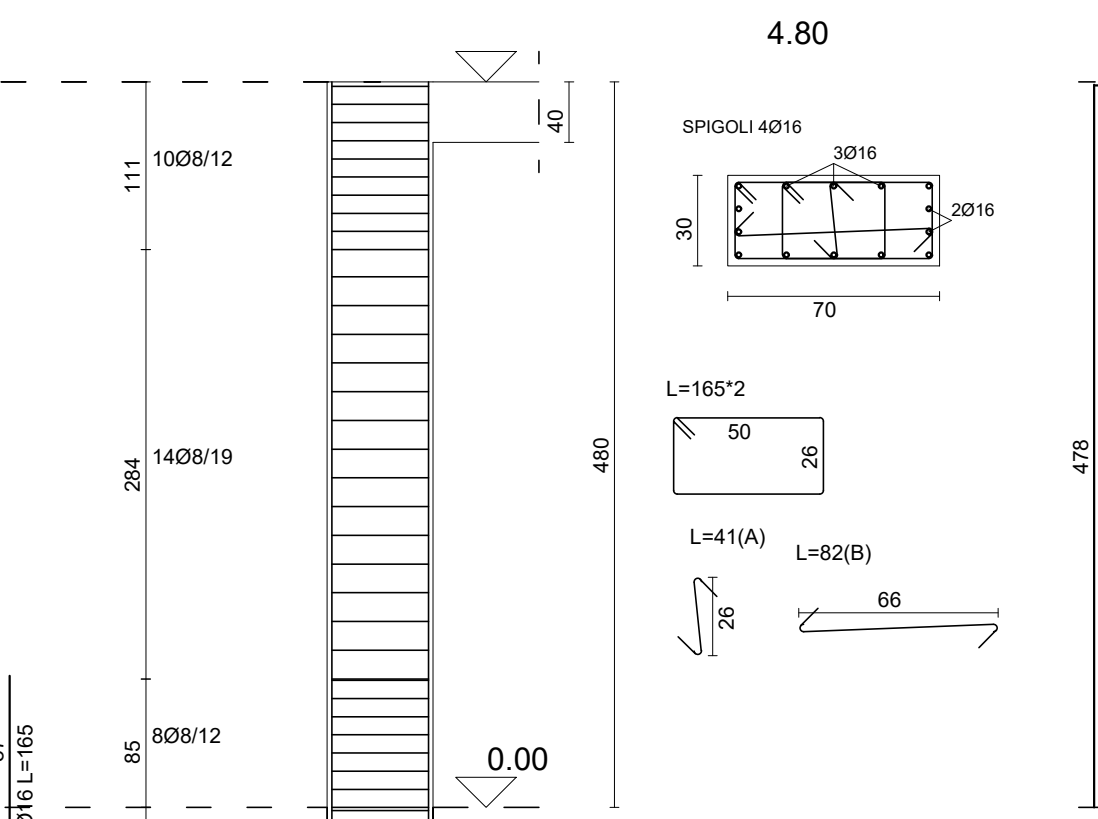
TABELLA PILASTRI QUOTA m: 0.00			
PIL.		PIL.	
60	L=480 L.FER=521 SPIGOLI 4816 A= 3016 B= 3016 C= 3016 D= 3016 STAFFE: 50'26 L.TOT=164'2 Ø8/12 L= 110 Ø8/16 L= 280 Ø8/12 L= 83	64	L=480 L.FER=521 SPIGOLI 4816 A= 3016 B= 3016 C= 3016 D= 3016 STAFFE: 20'50 L.TOT=164'2 Ø8/12 L= 110 Ø8/16 L= 280 Ø8/12 L= 78
61	L=480 L.FER=521 SPIGOLI 4816 A= 3016 B= 3016 C= 3016 D= 3016 STAFFE: 50'26 L.TOT=164'2 Ø8/12 L= 111 Ø8/16 L= 280 Ø8/12 L= 84		
62	L=480 L.FER=521 SPIGOLI 4816 A= 3016 B= 3016 C= 3016 D= 3016 STAFFE: 20'50 L.TOT=164'2 Ø8/12 L= 110 Ø8/16 L= 280 Ø8/12 L= 82	63	L=480 L.FER=521 SPIGOLI 4816 A= 3016 B= 3016 C= 3016 D= 3016 STAFFE: 20'50 L.TOT=164'2 Ø8/12 L= 110 Ø8/16 L= 280 Ø8/12 L= 82
ACCIAIO B450C		CALCESTR. C25/30	



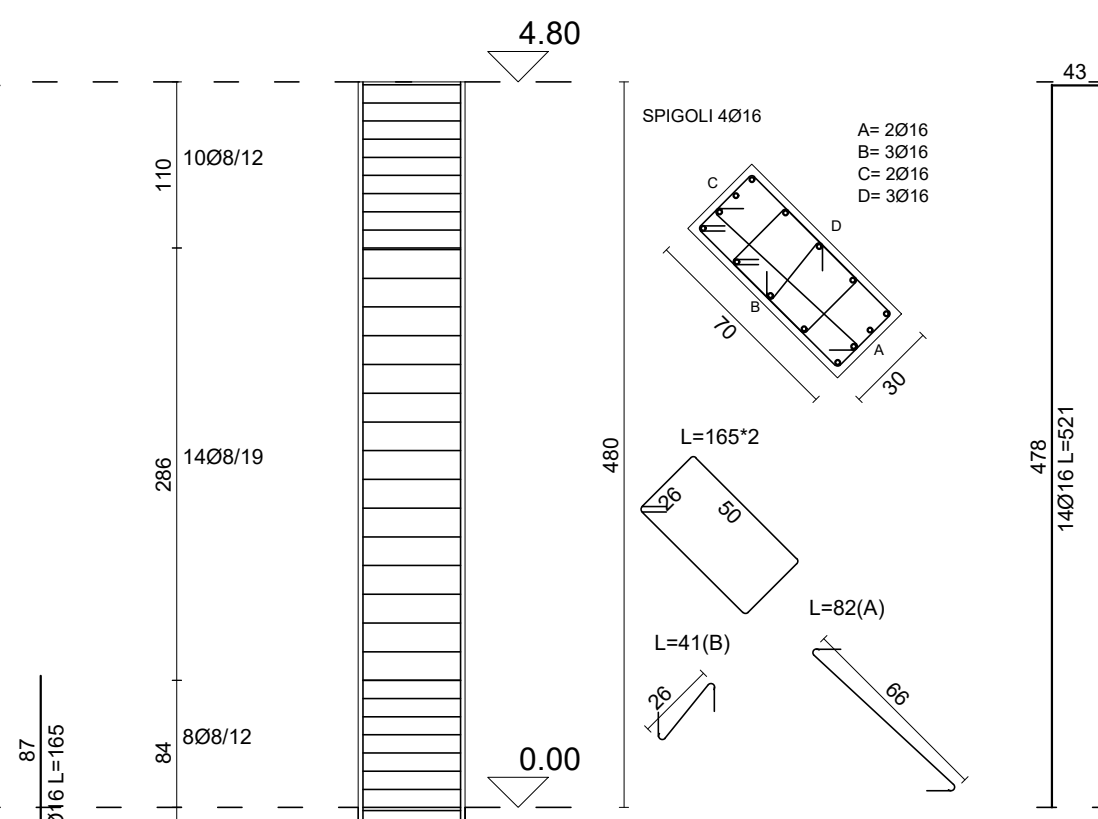
PILASTRATA 1



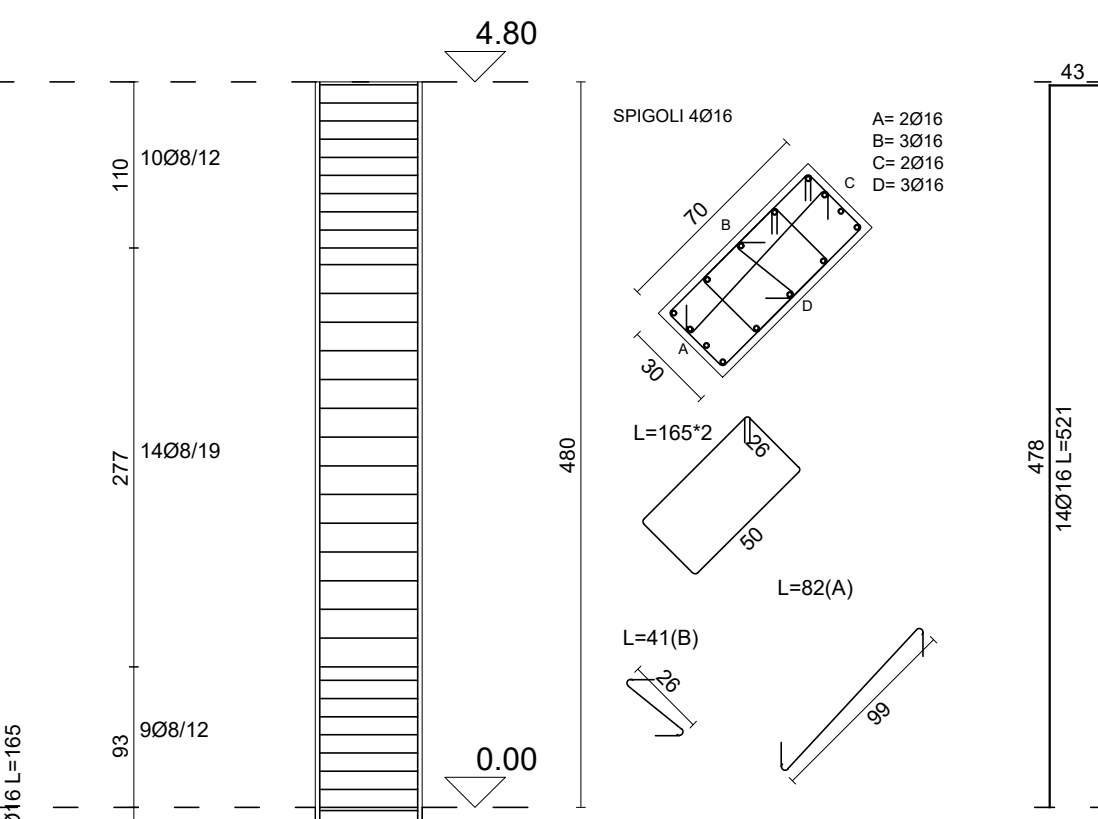
PILASTRATA 2



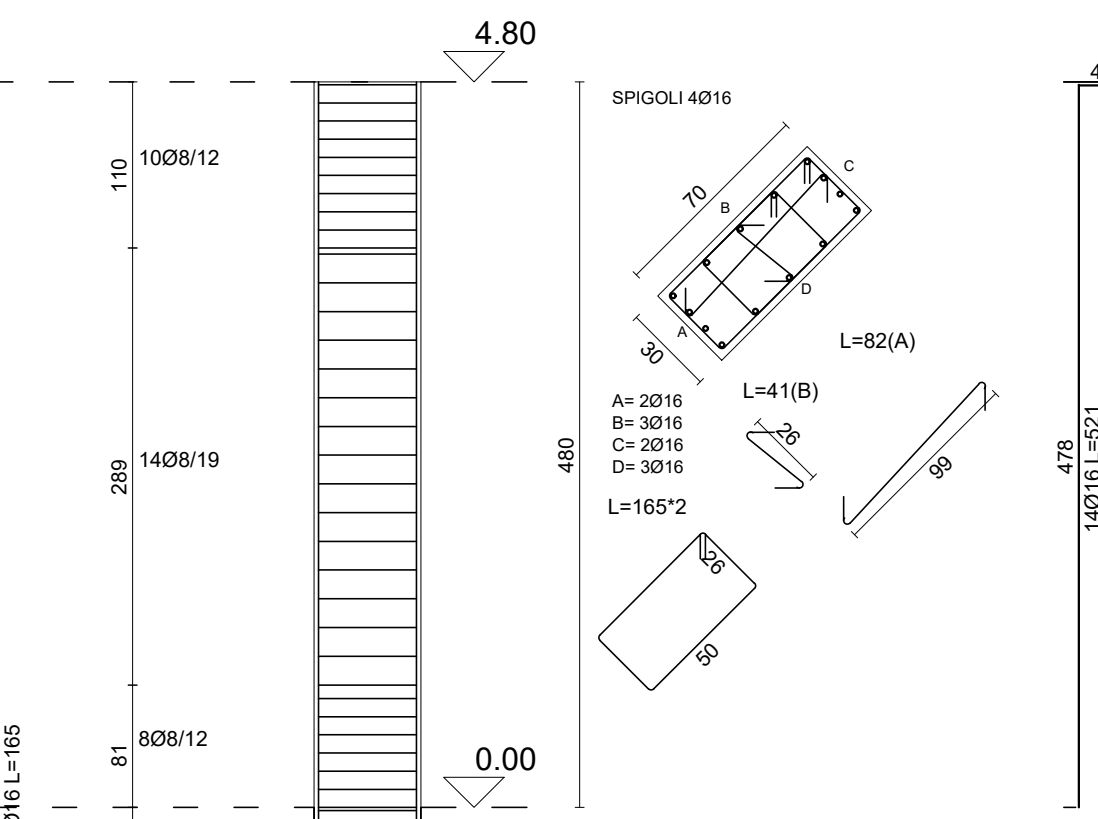
PILASTRATA 3



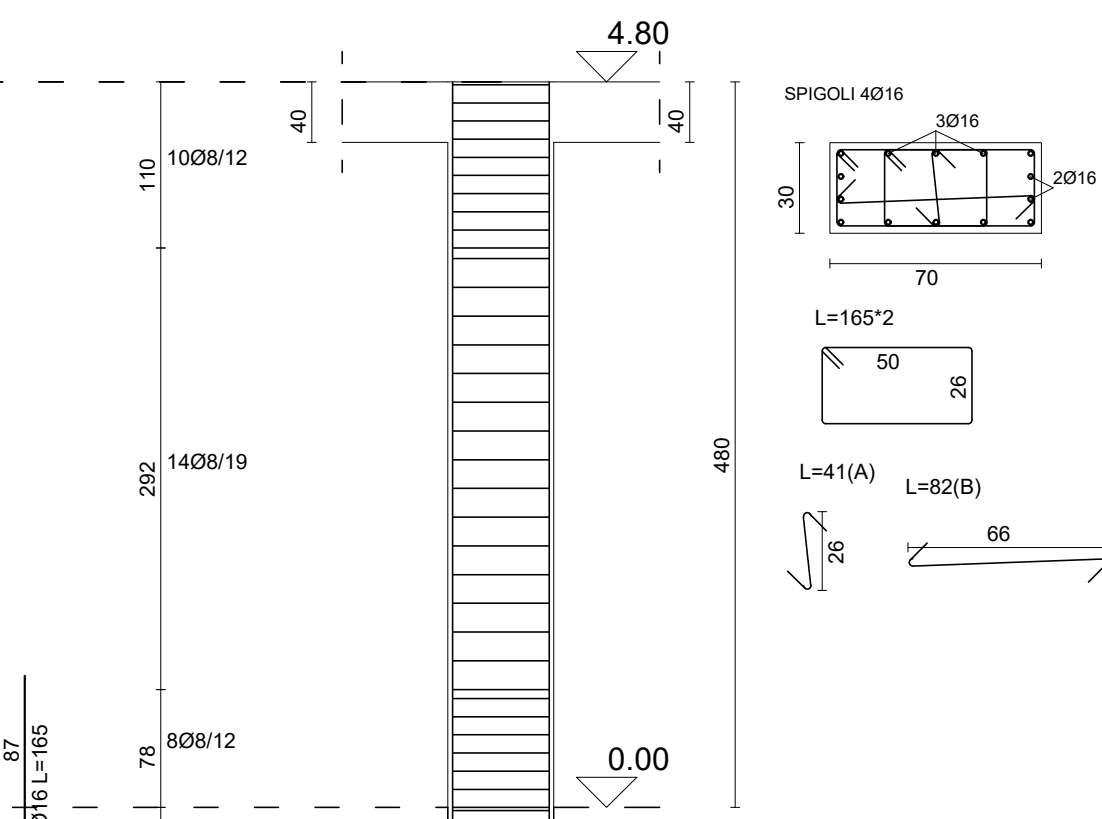
PILASTRATA 10



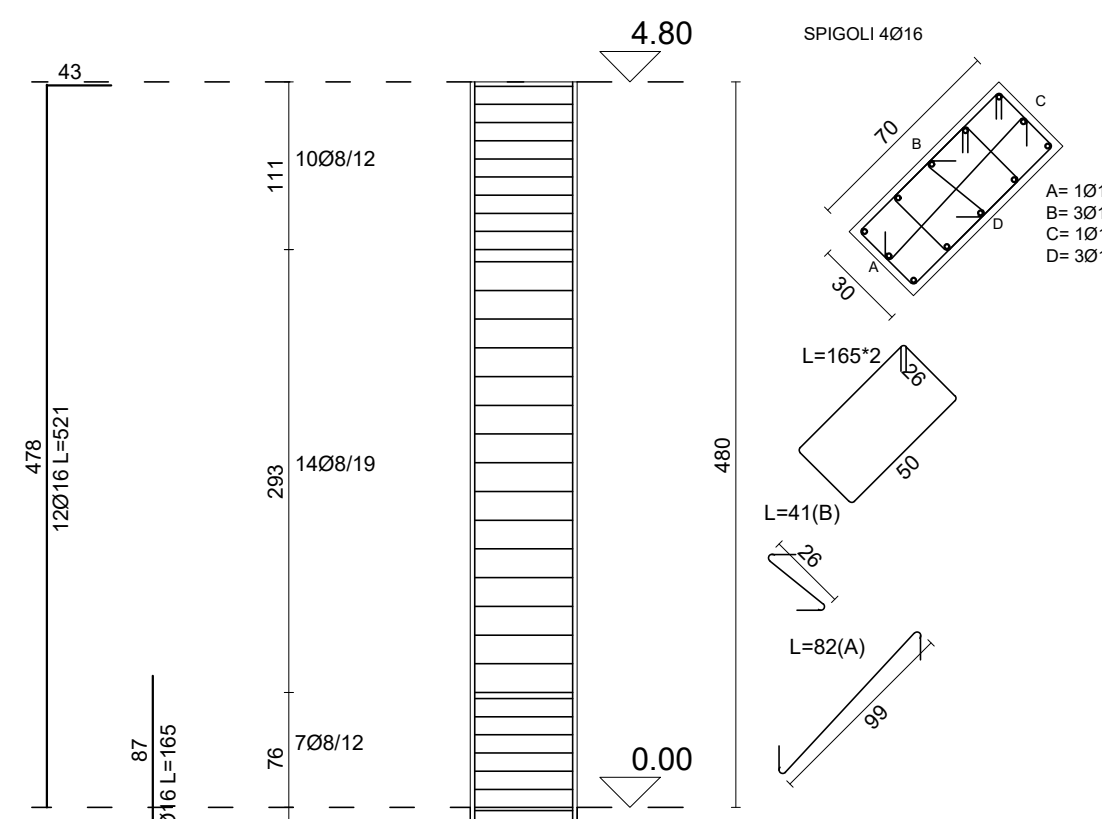
PILASTRATA 11



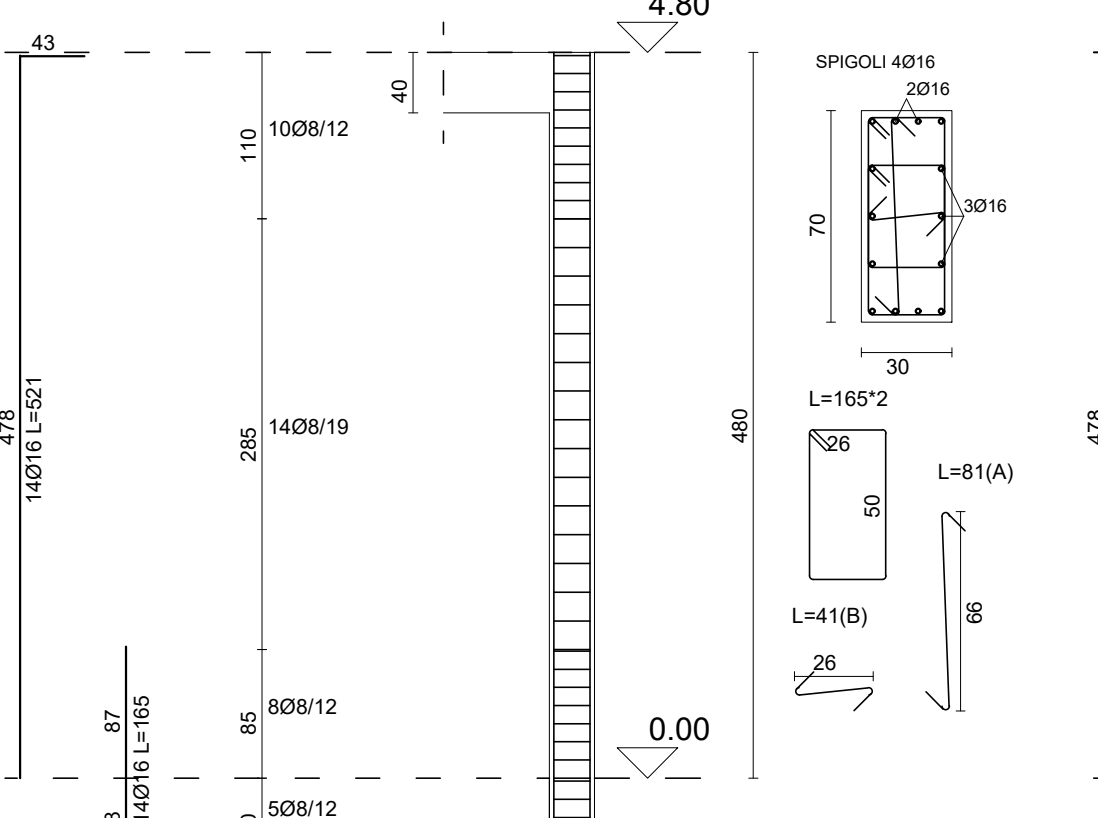
PILASTRATA 12



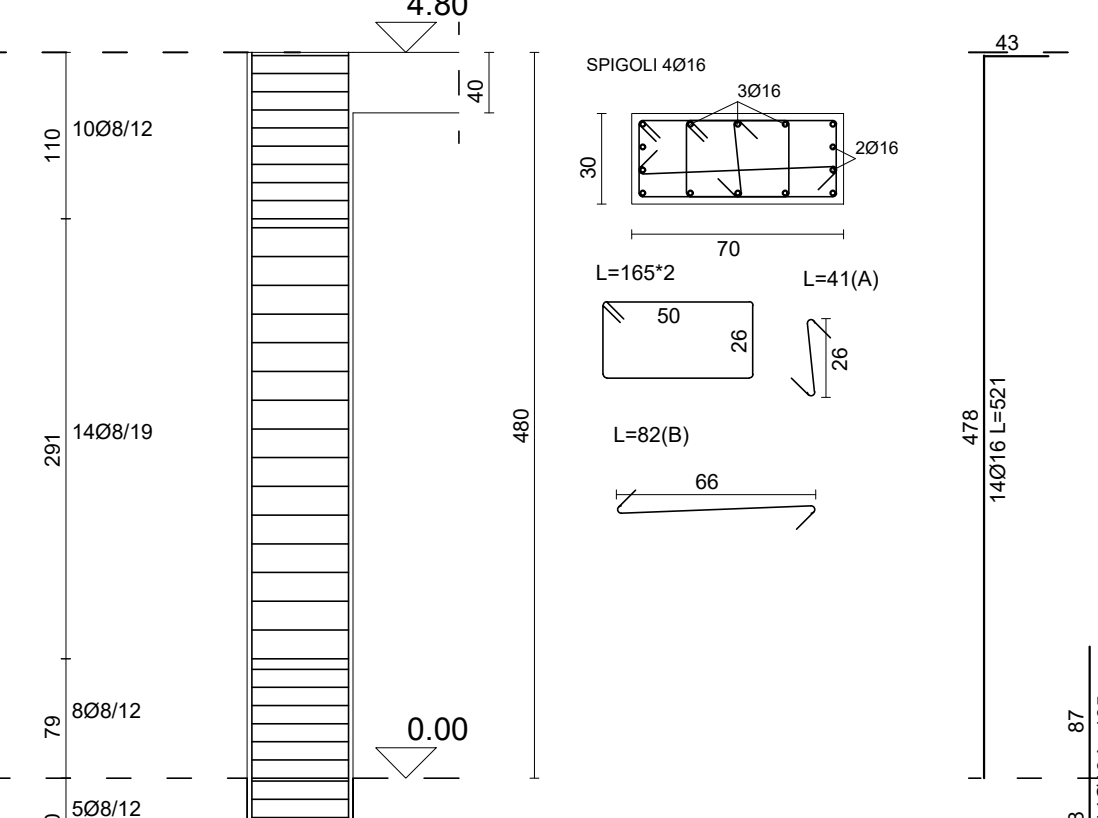
PILASTRATA 19



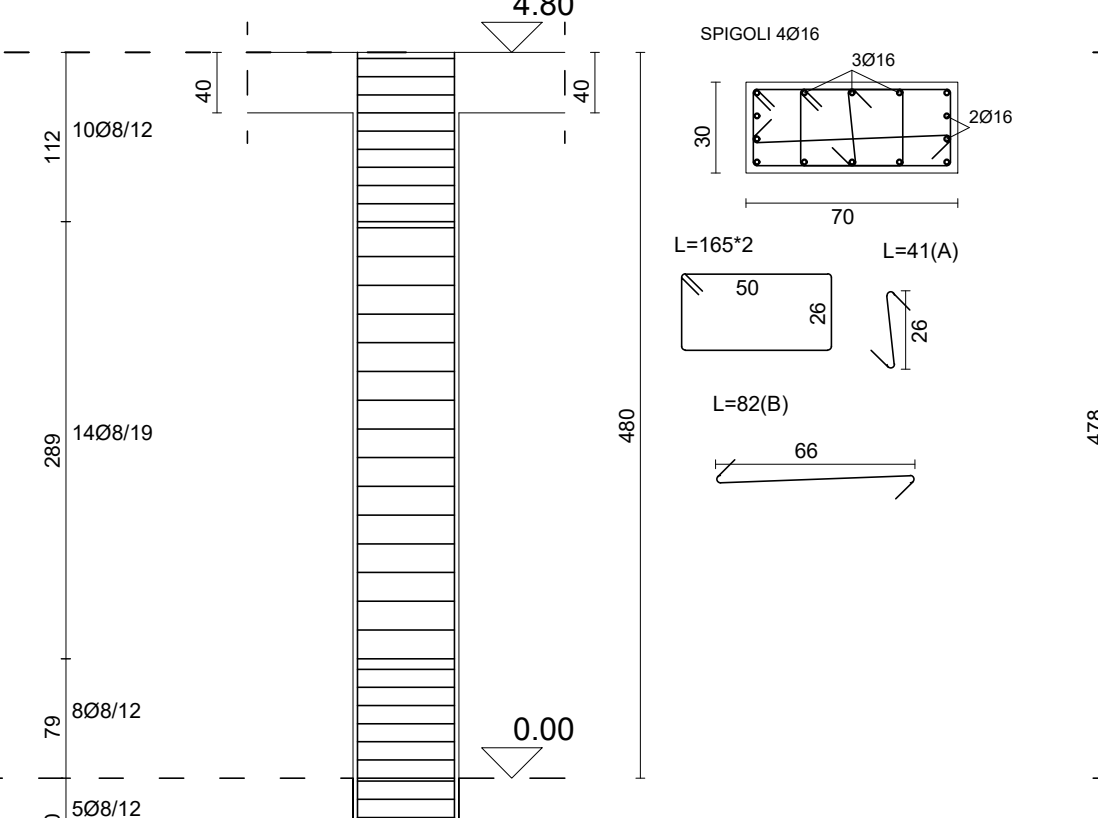
PILASTRATA 26



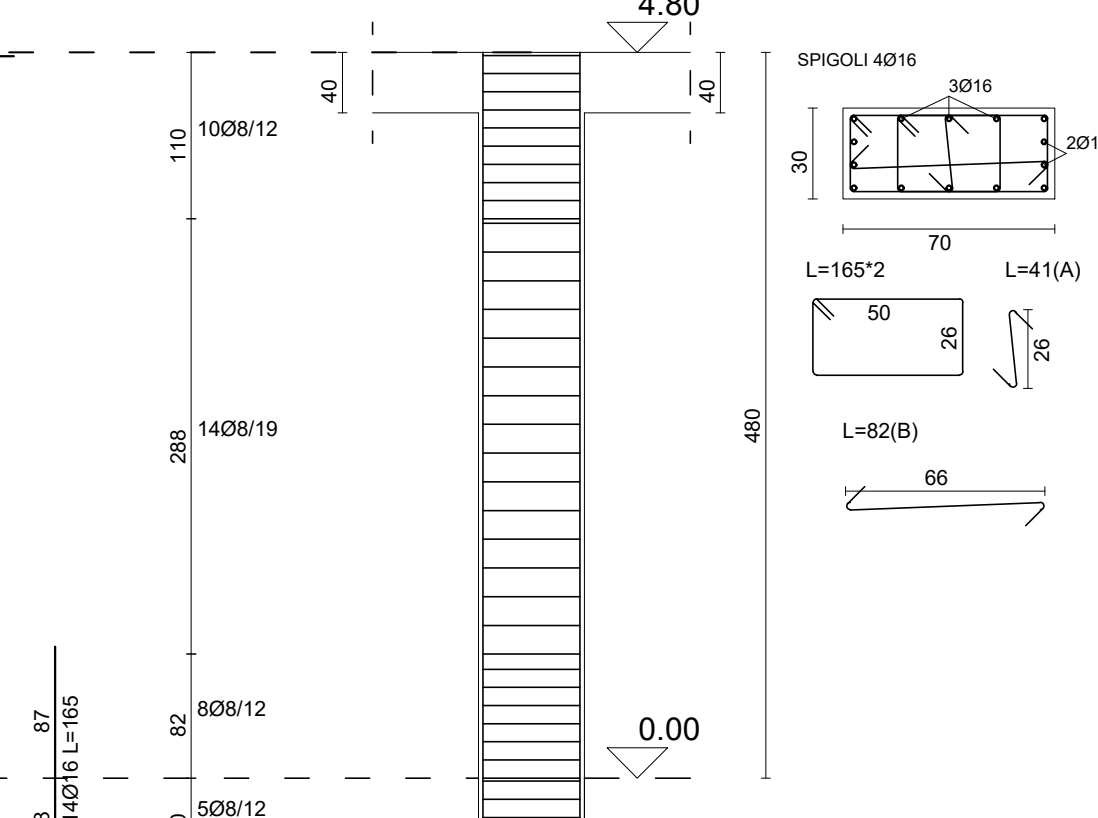
PILASTRATA 33



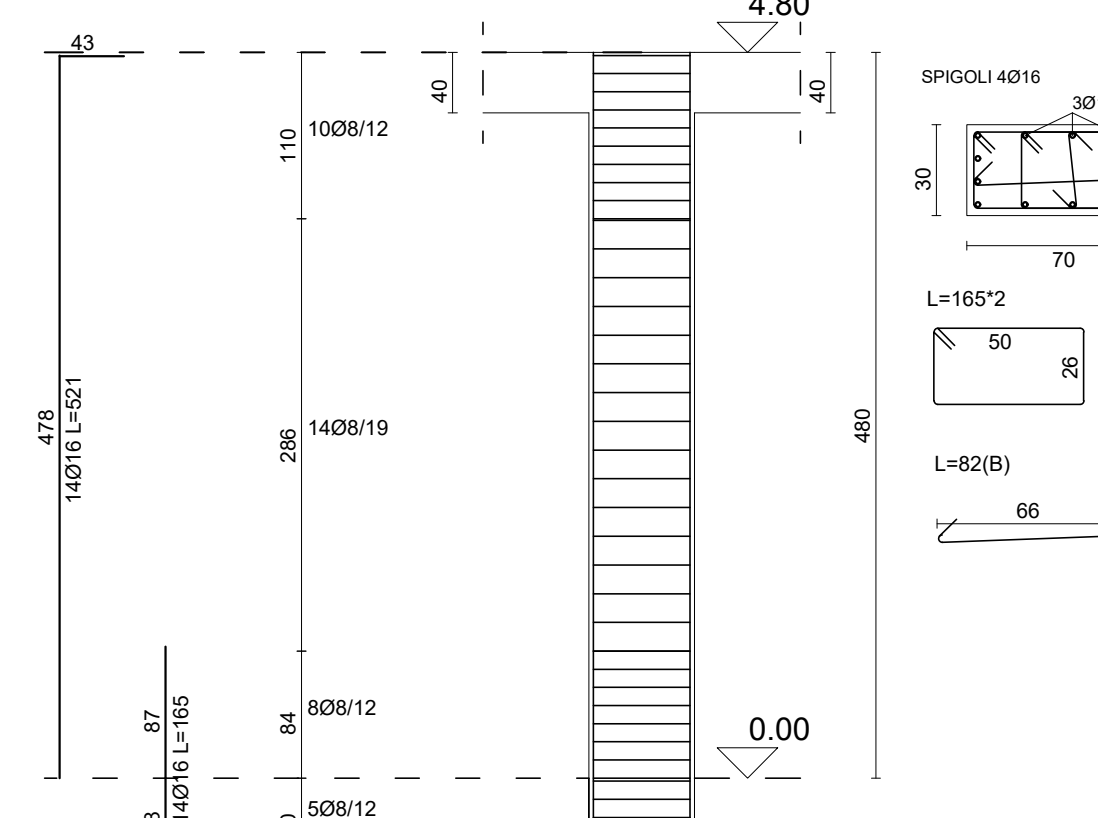
PILASTRATA 34



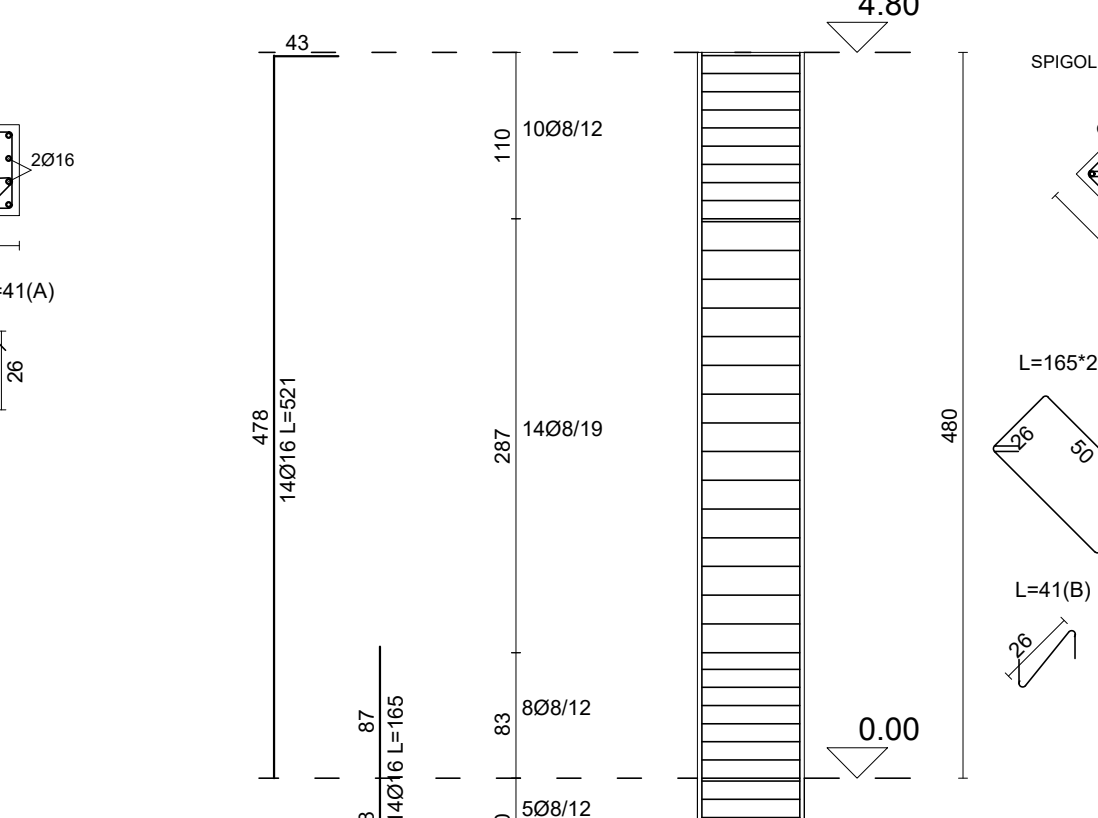
PILASTRATA 38



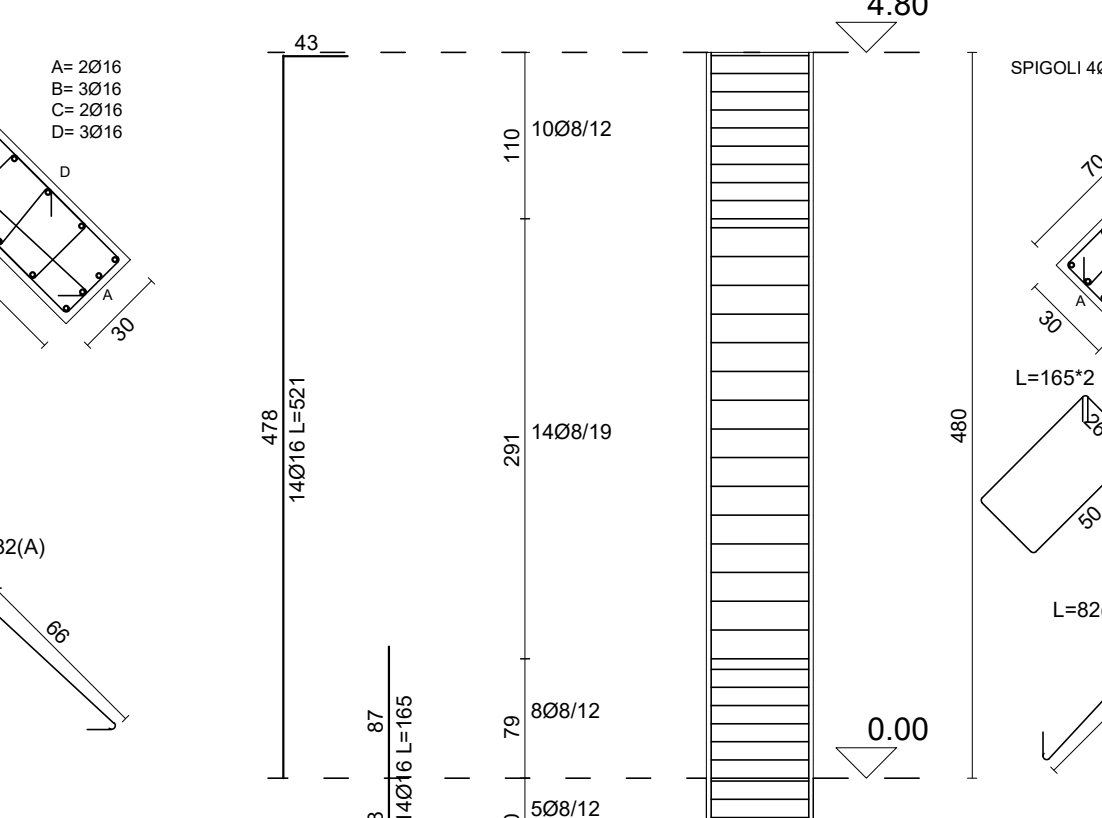
PILASTRATA 39



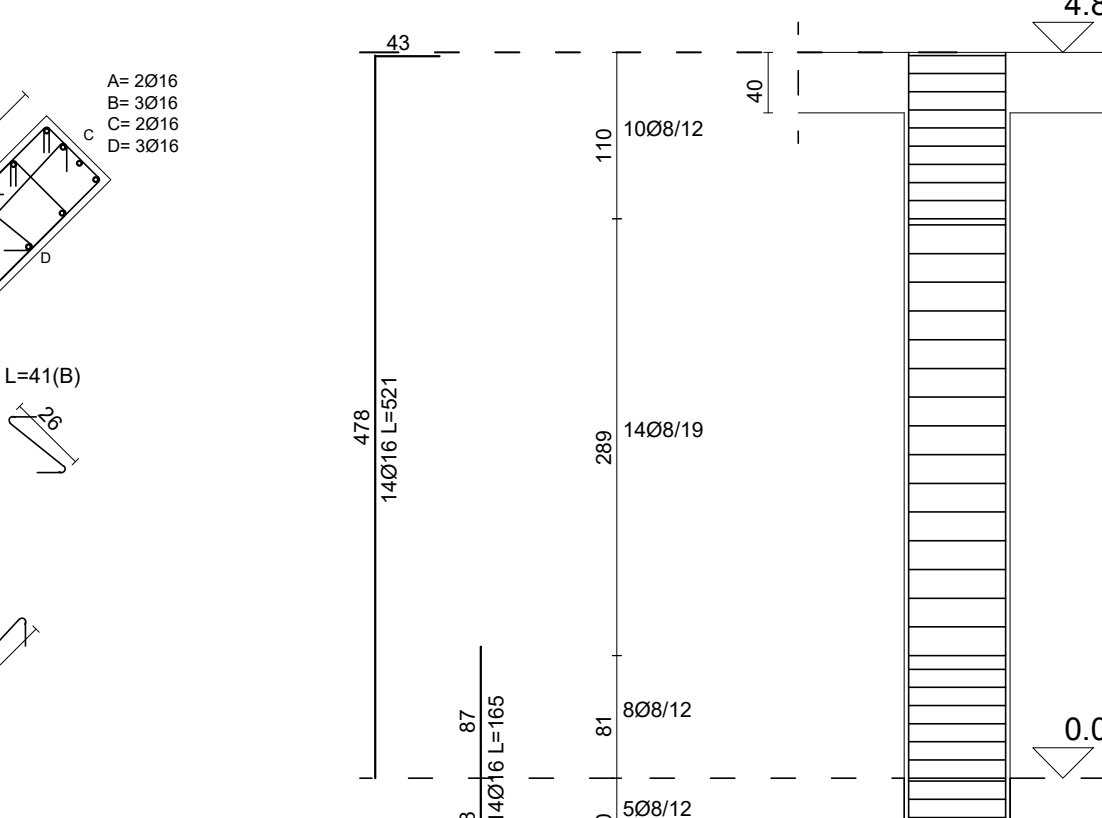
PILASTRATA 40



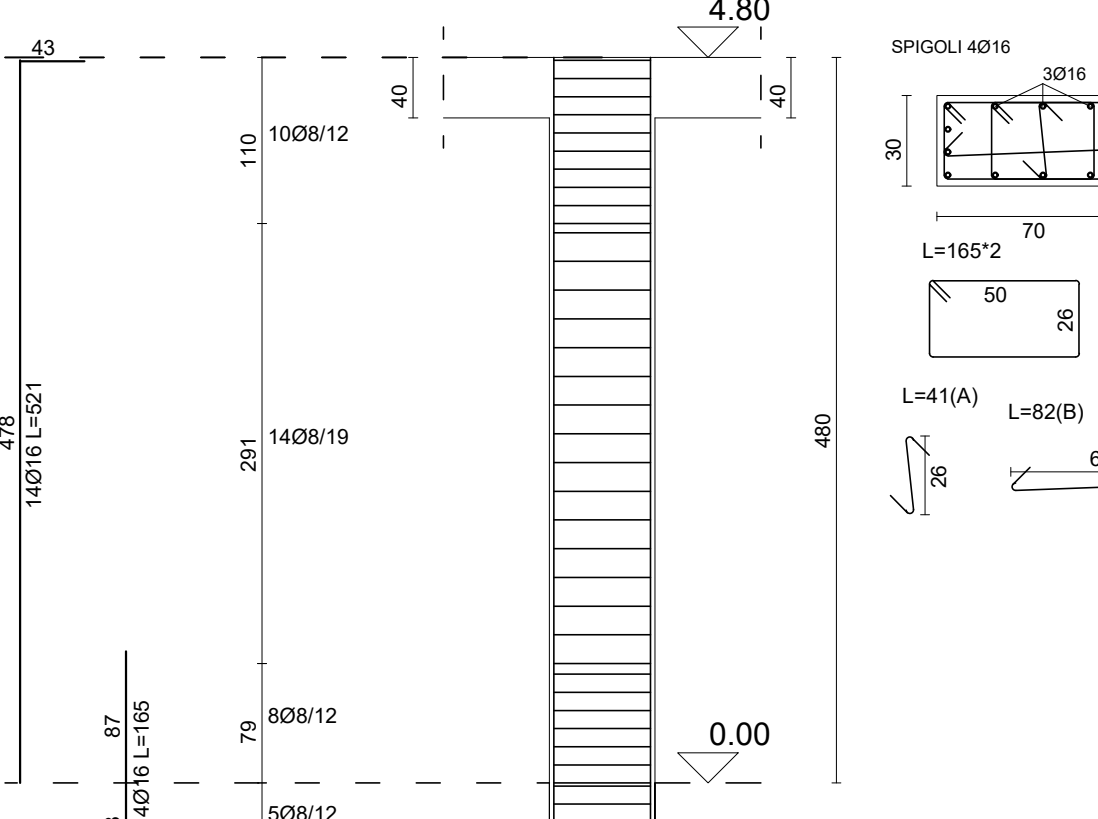
PILASTRATA 44



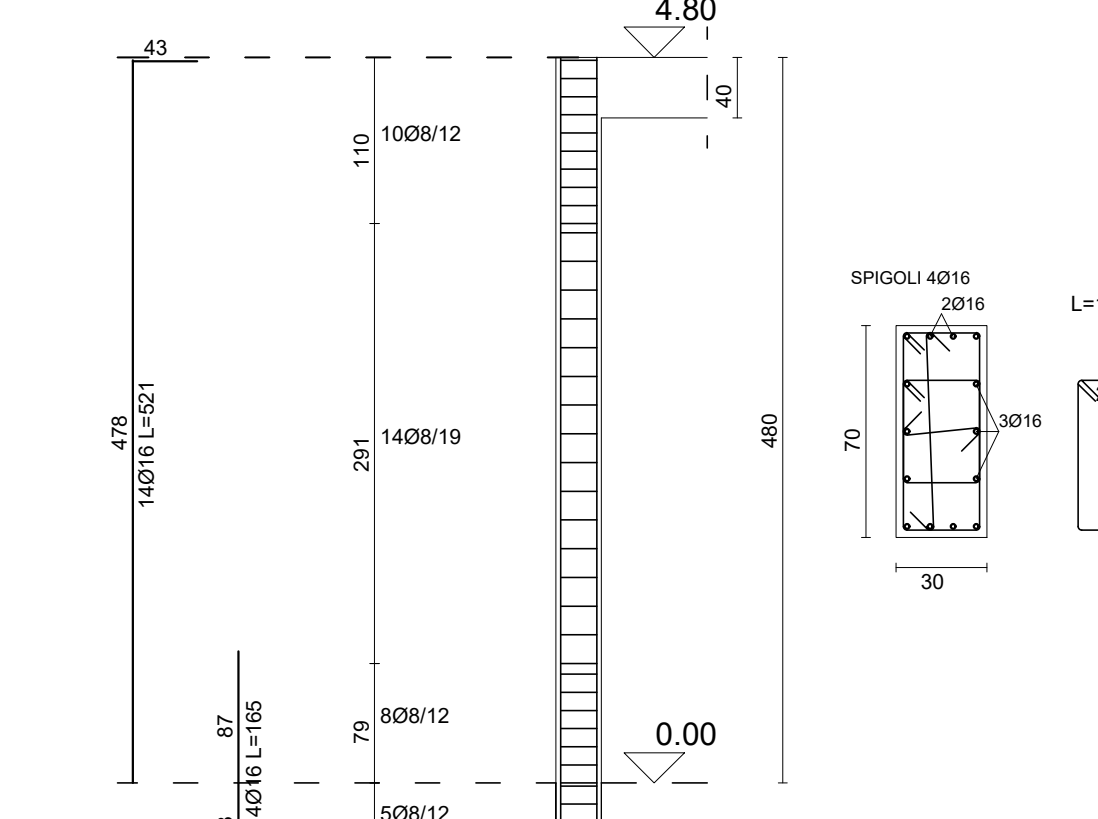
PILASTRATA 45



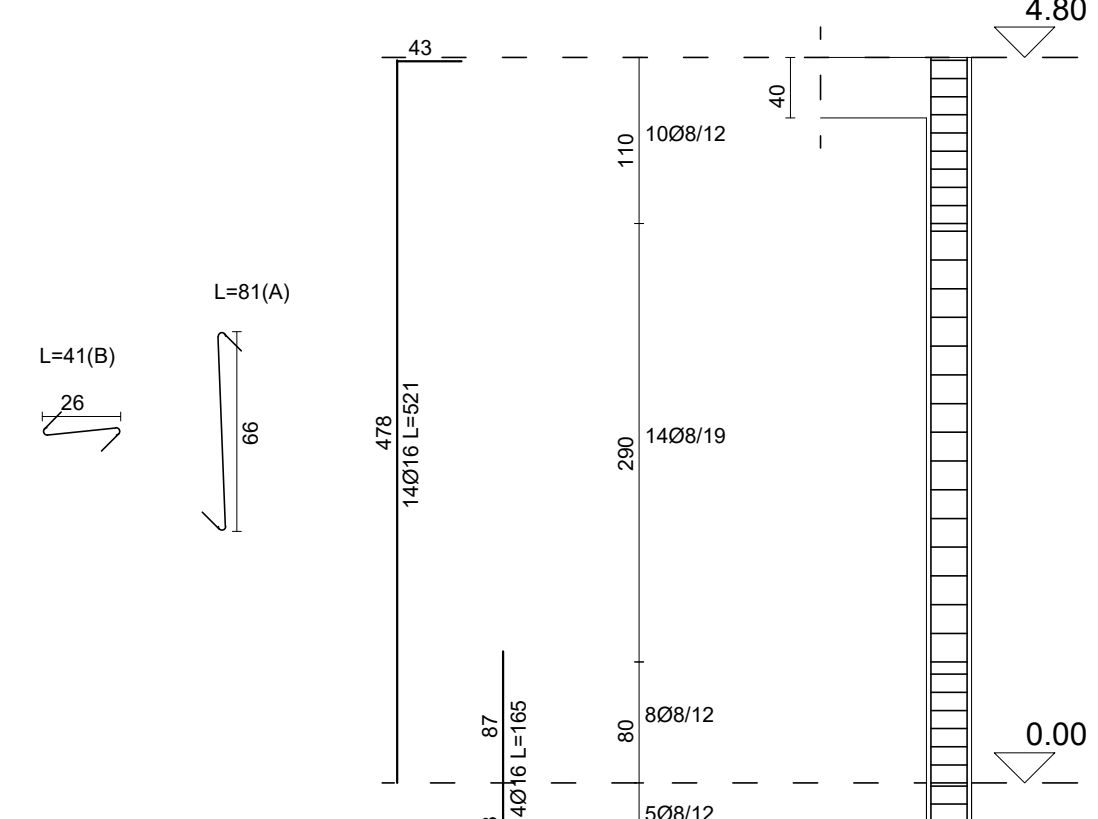
PILASTRATA 49



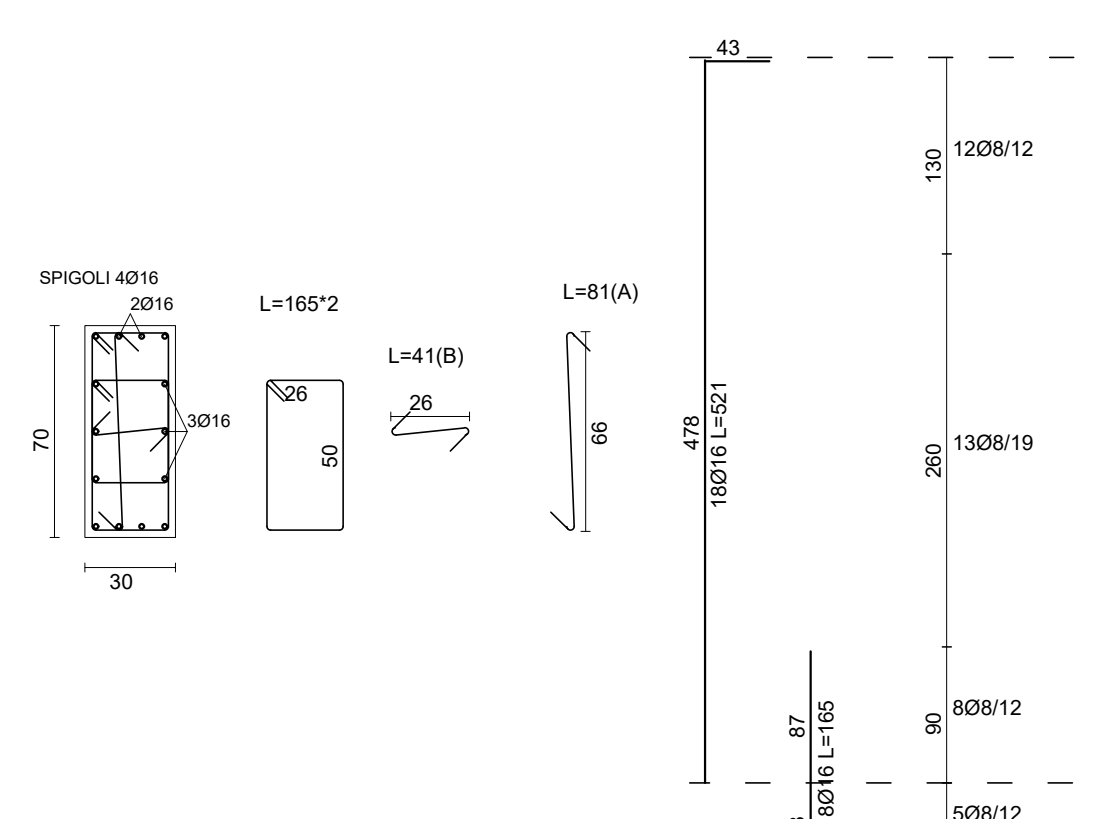
PILASTRATA 50



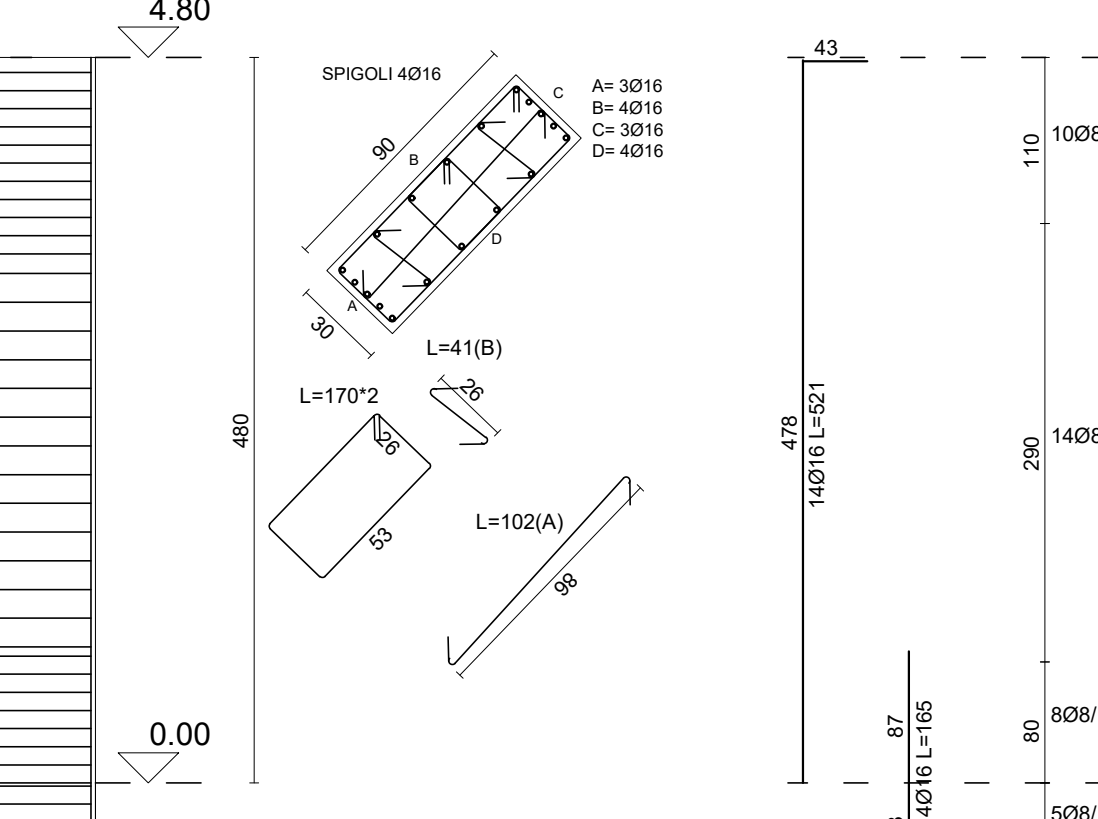
PILASTRATA 51



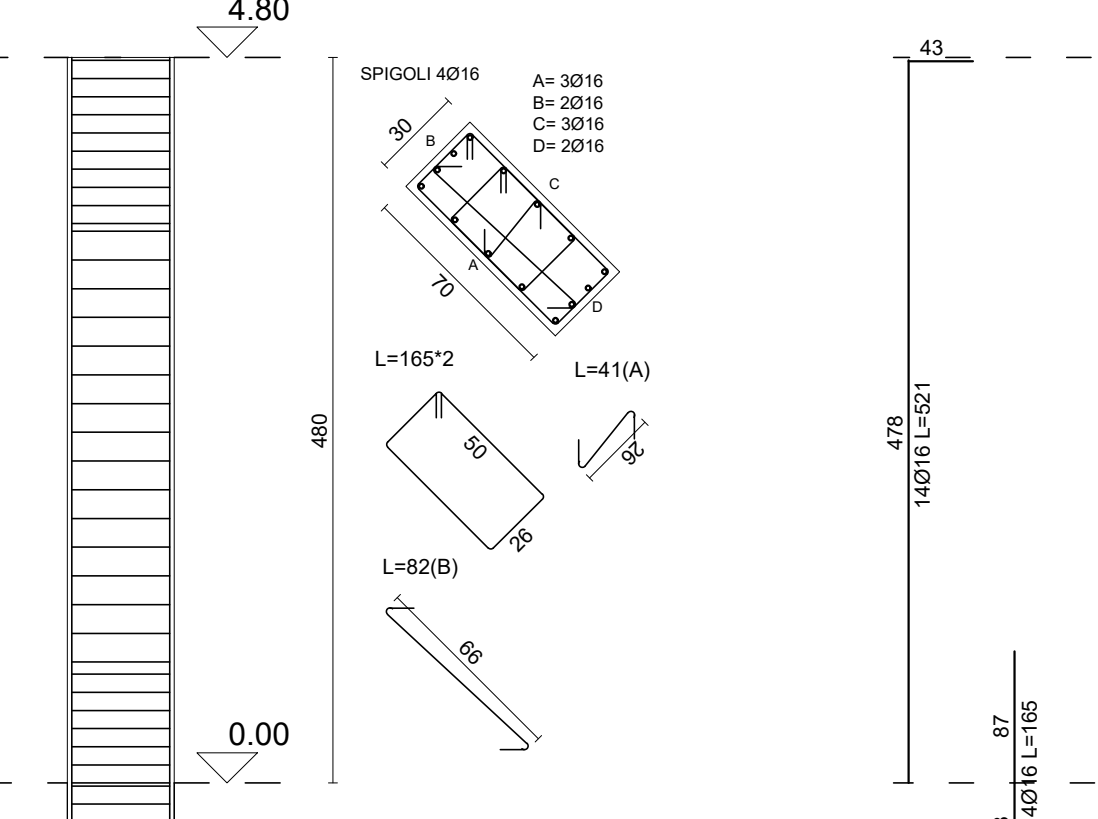
PILASTRATA 52



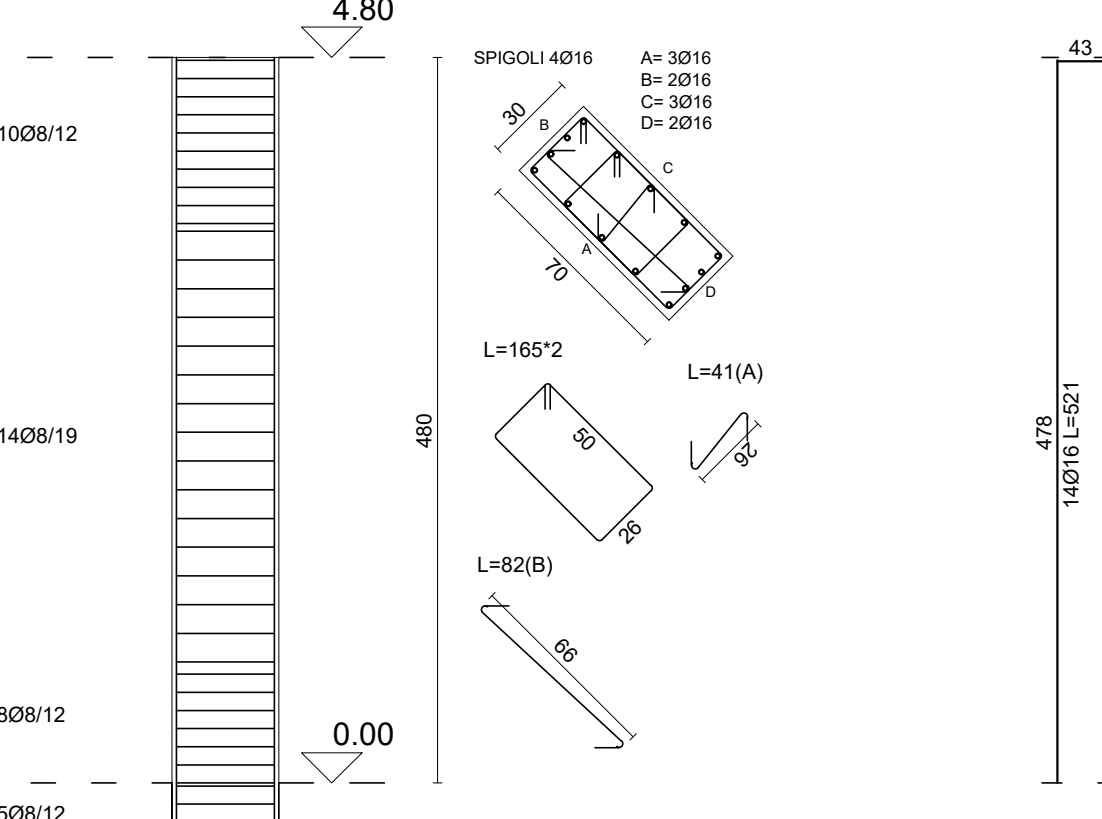
PILASTRATA 53



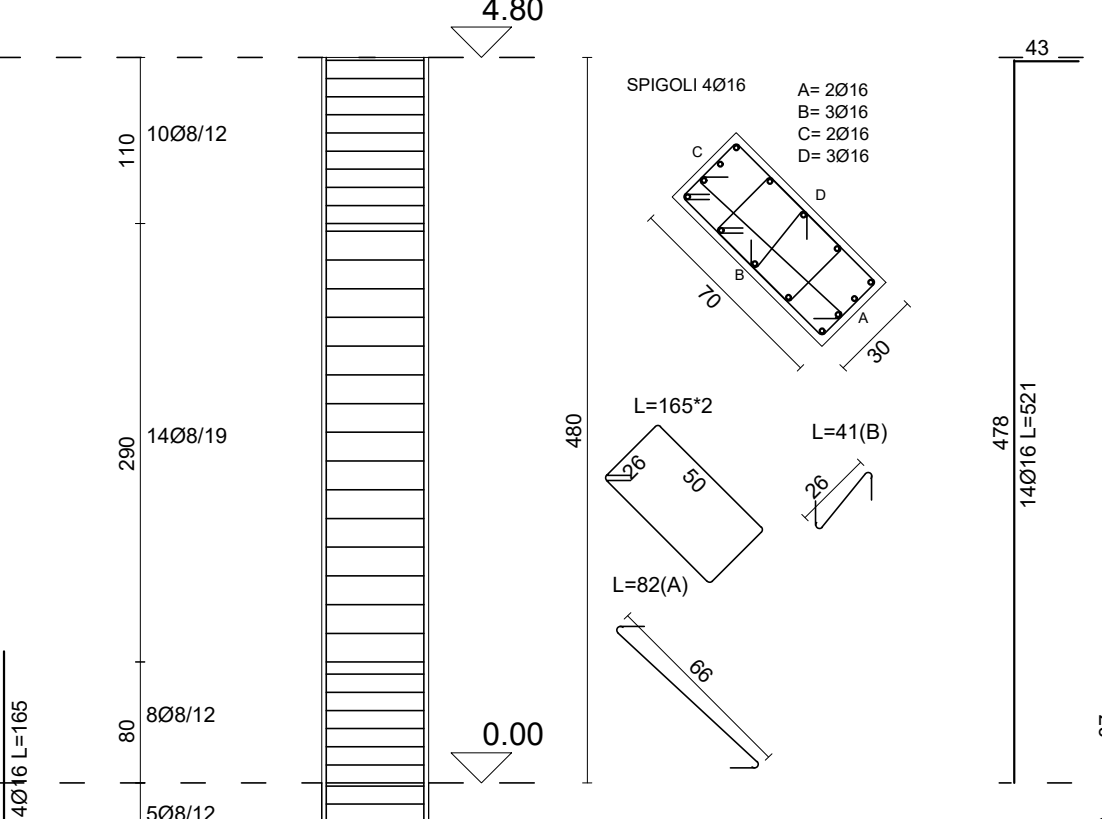
PILASTRATA 54



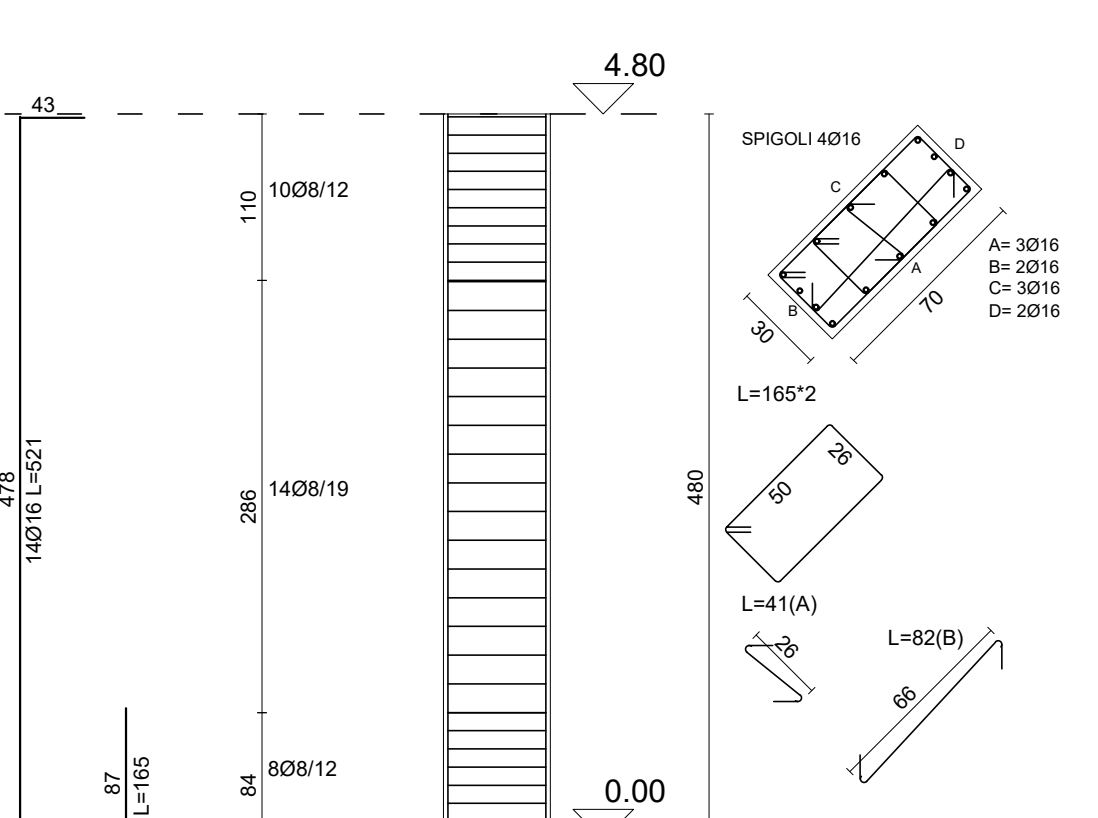
PILASTRATA 55



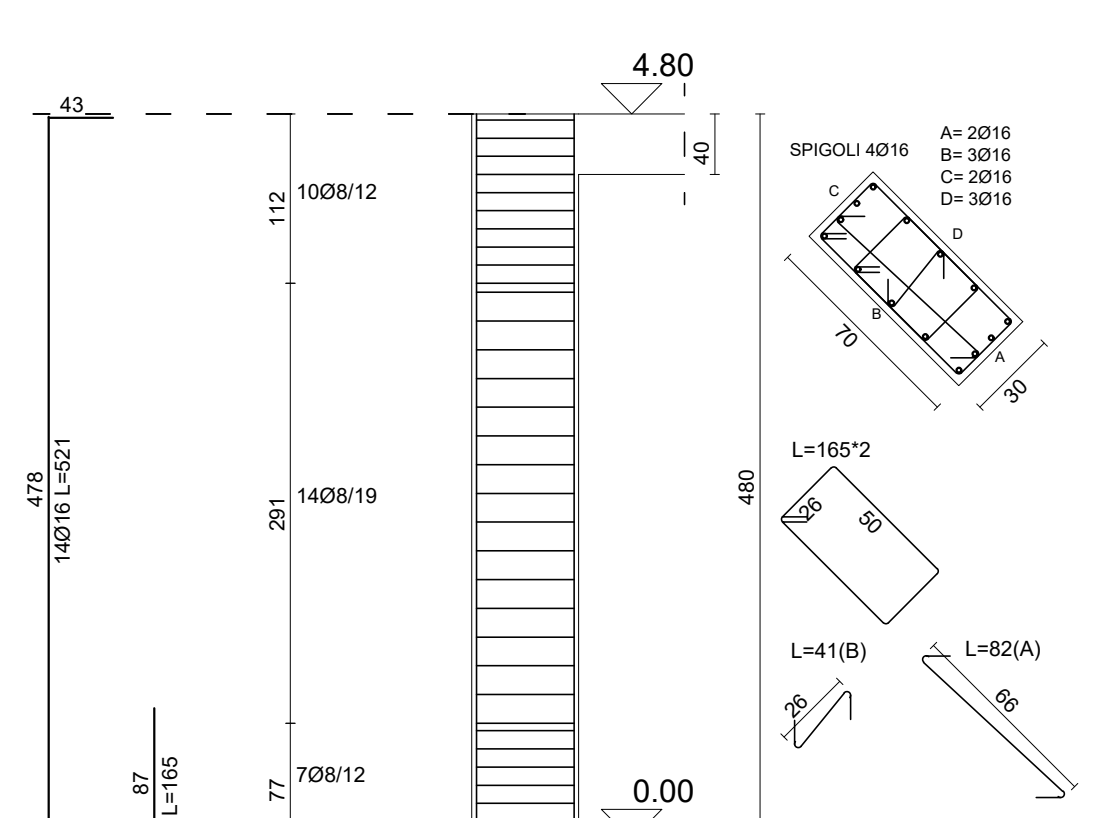
PILASTRATA 56



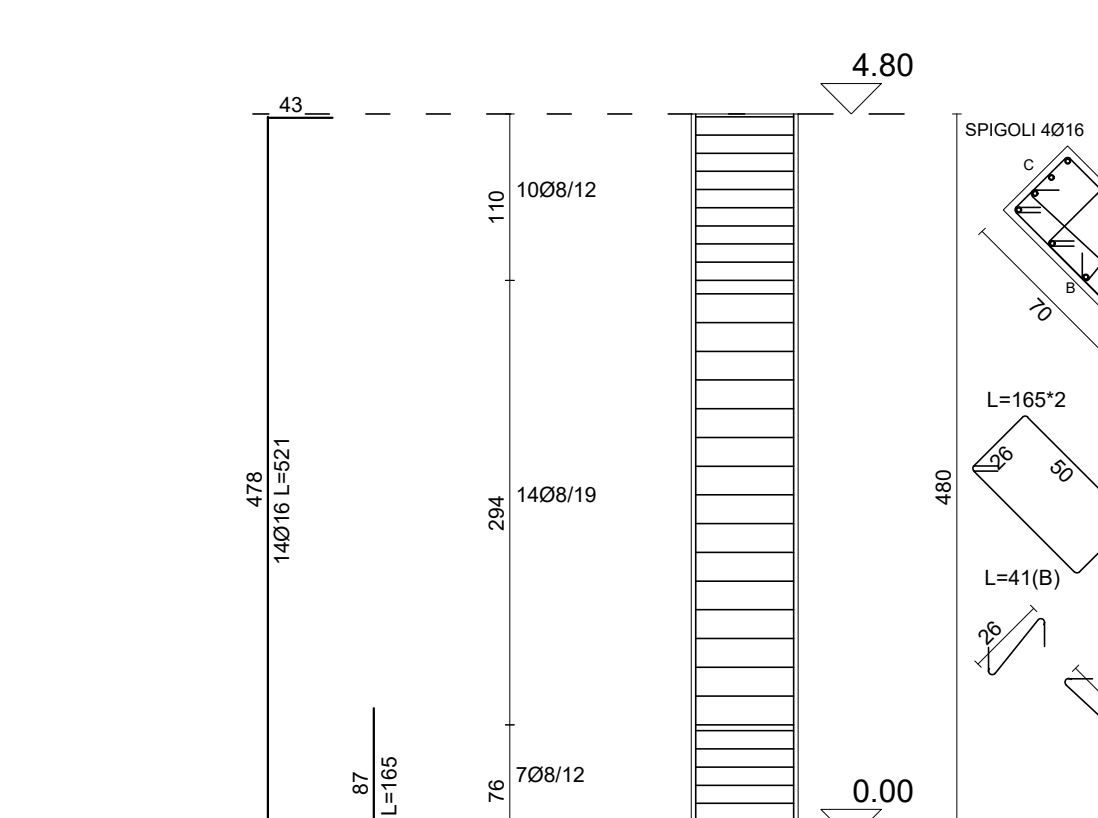
PILASTRATA 65



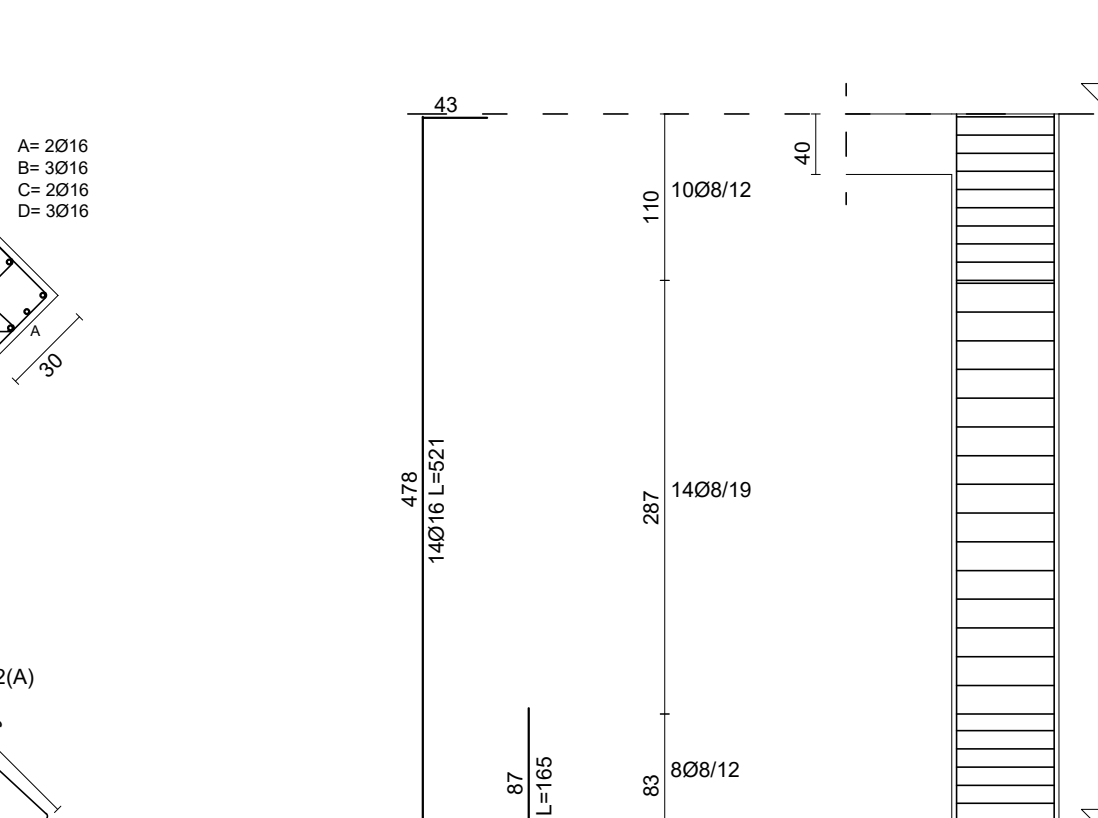
PILASTRATA 57



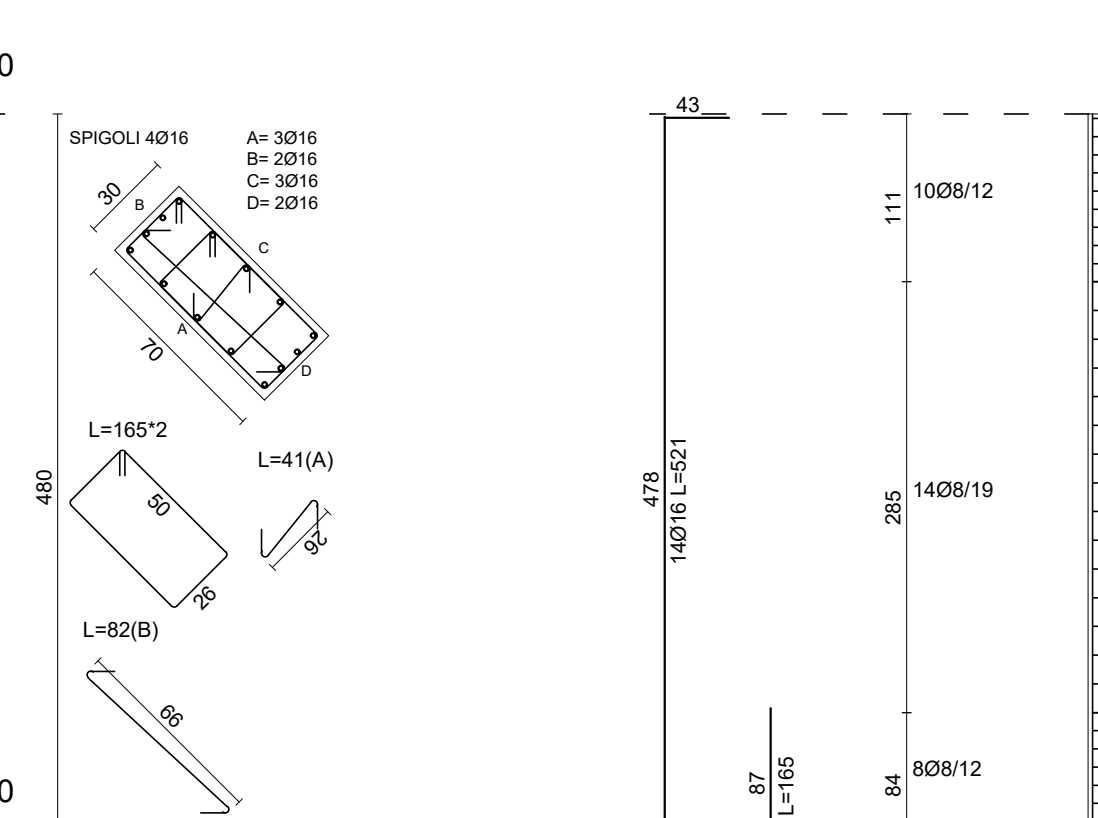
PILASTRATA 58



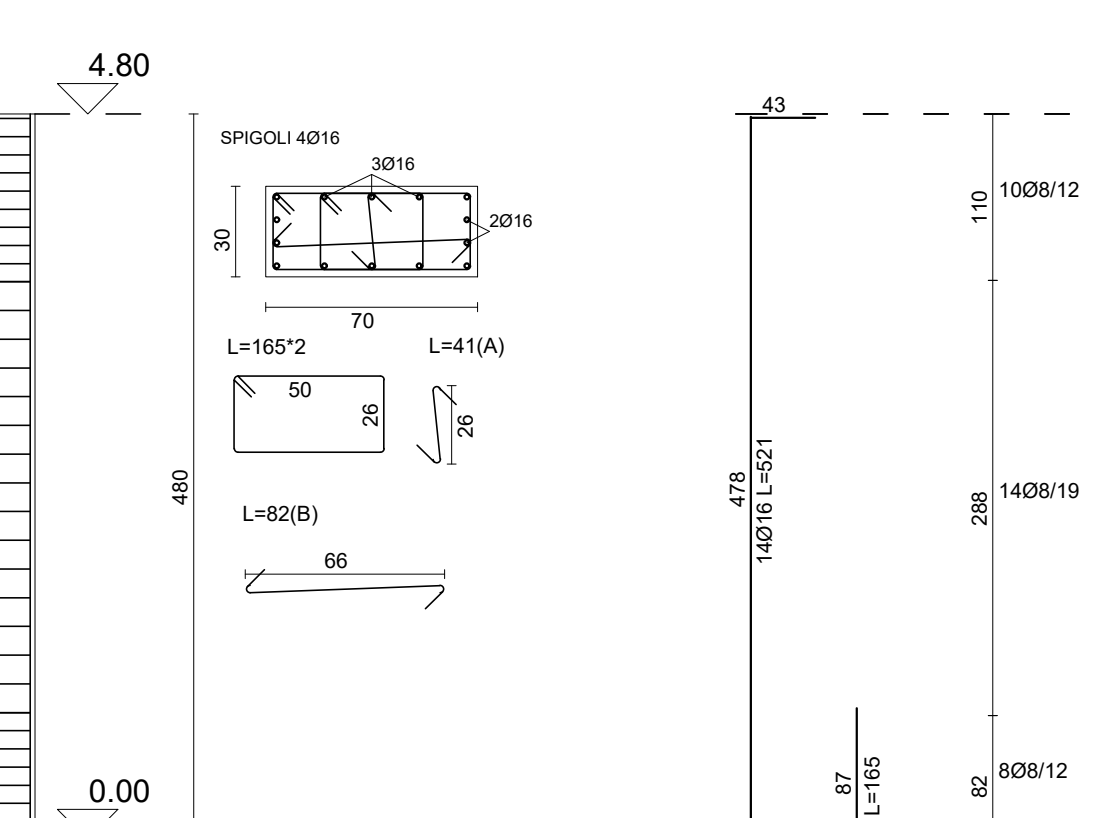
PILASTRATA 59



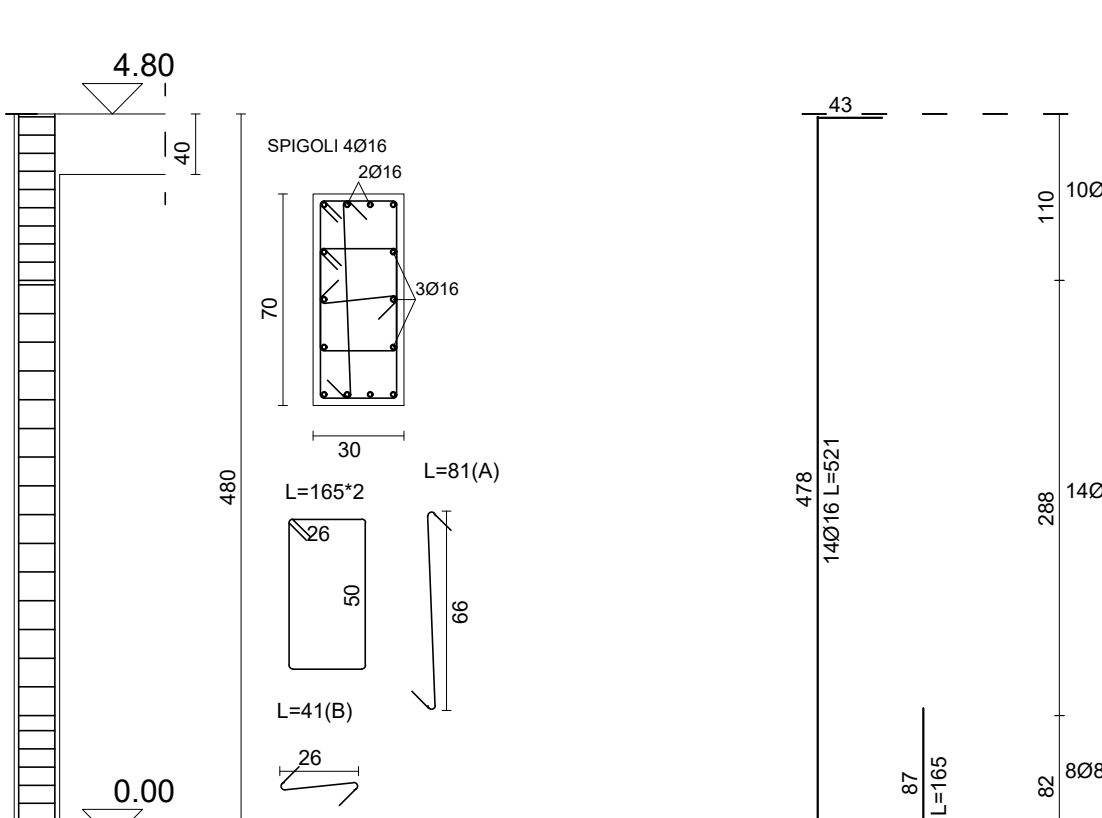
PILASTRATA 60



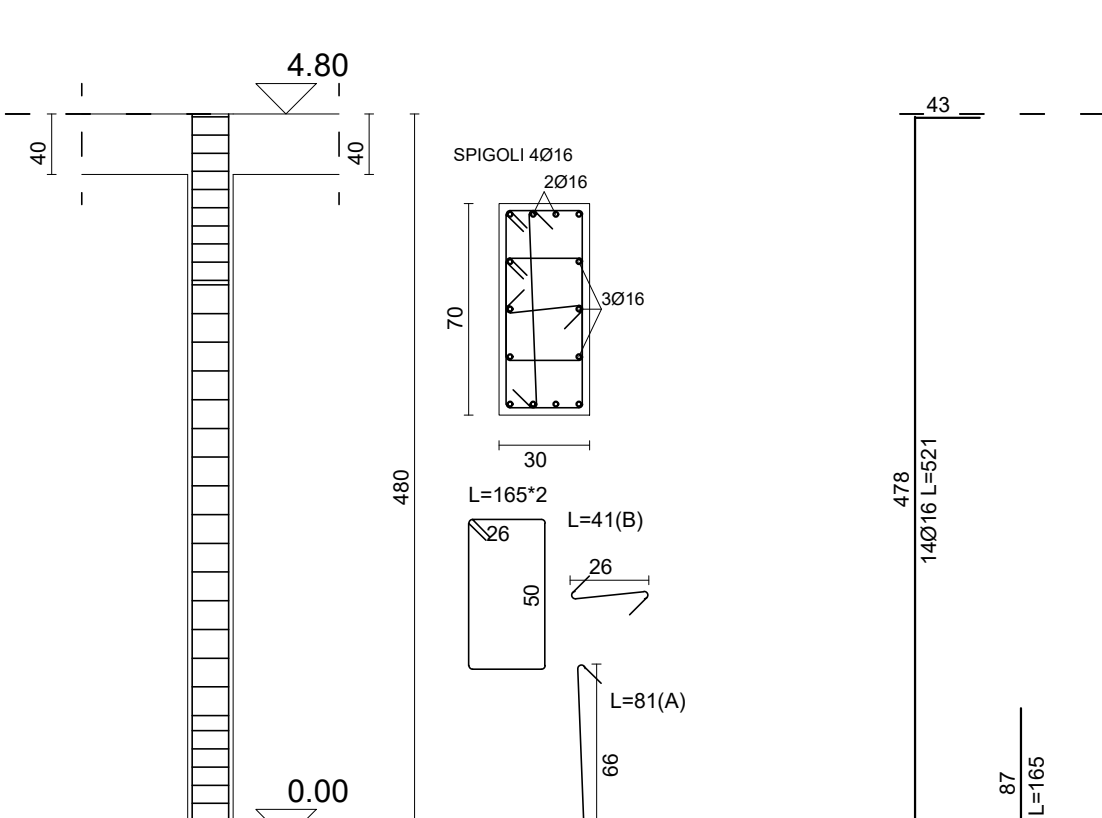
PILASTRATA 61



PILASTRATA 62



PILASTRATA 63



PILASTRATA 64